

Figures

Figure I-1. Location Map

Figure I-2. Slope Analysis Plan

Figure II-1. Existing Conditions Plan

Figure II-2. Existing Base Area Utilities

Figure II-3. Existing Base Area

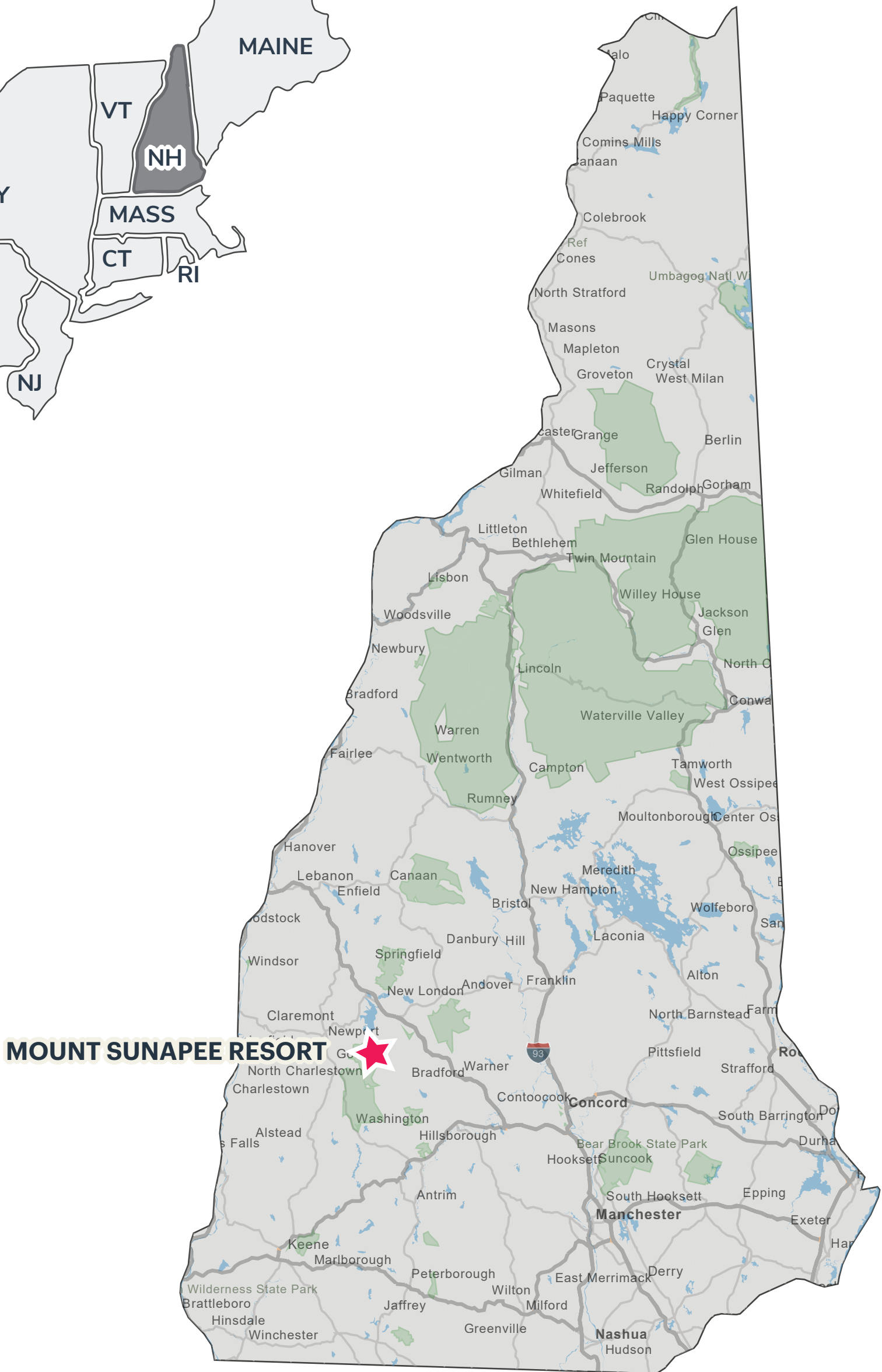
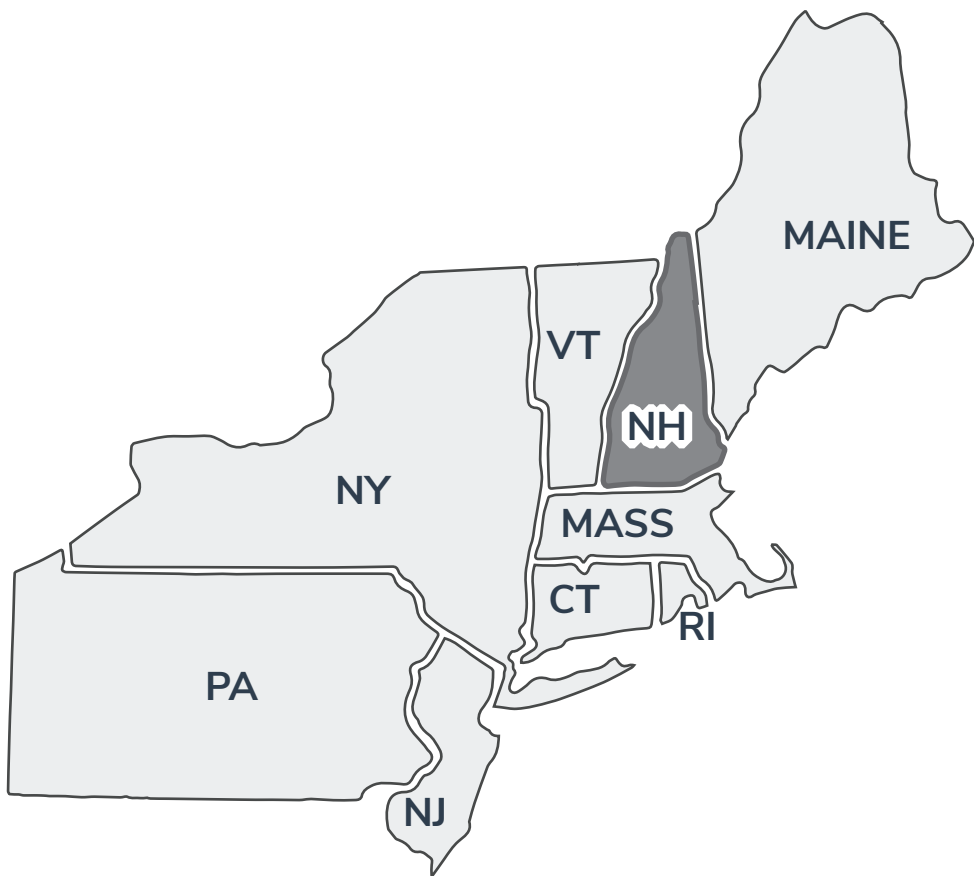
Figure III-1. Upgrade Plan

Figure III-2. West Bowl Overall Plan

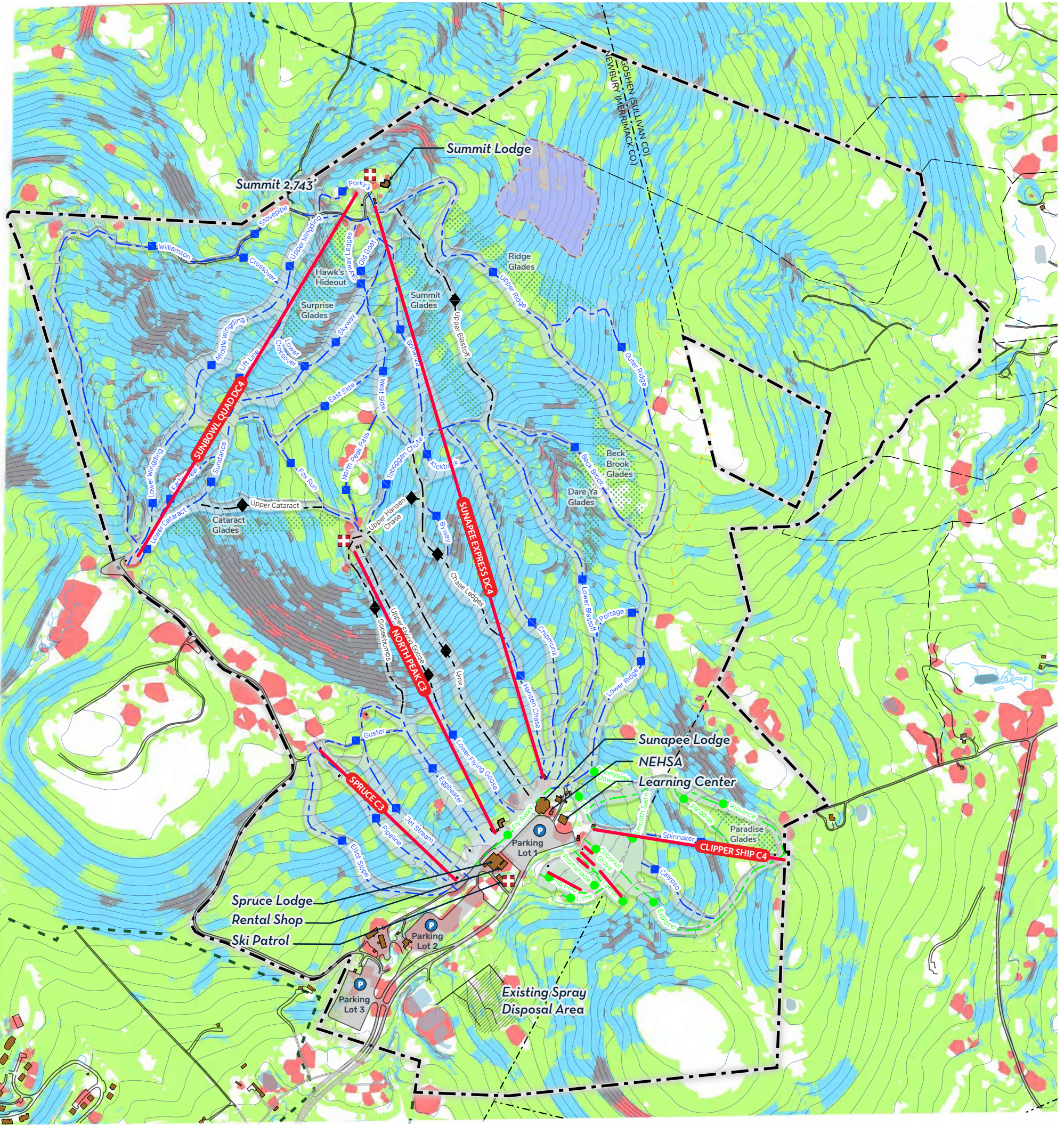
Figure III-3. Regional Map

Figure III-4. Snowmaking Plan

Figure III-5. Base Area Upgrade Plan



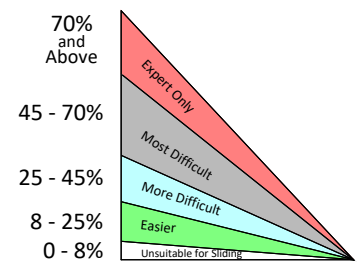
MOUNT SUNAPEE RESORT



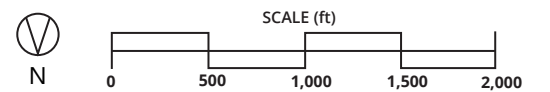
Legend

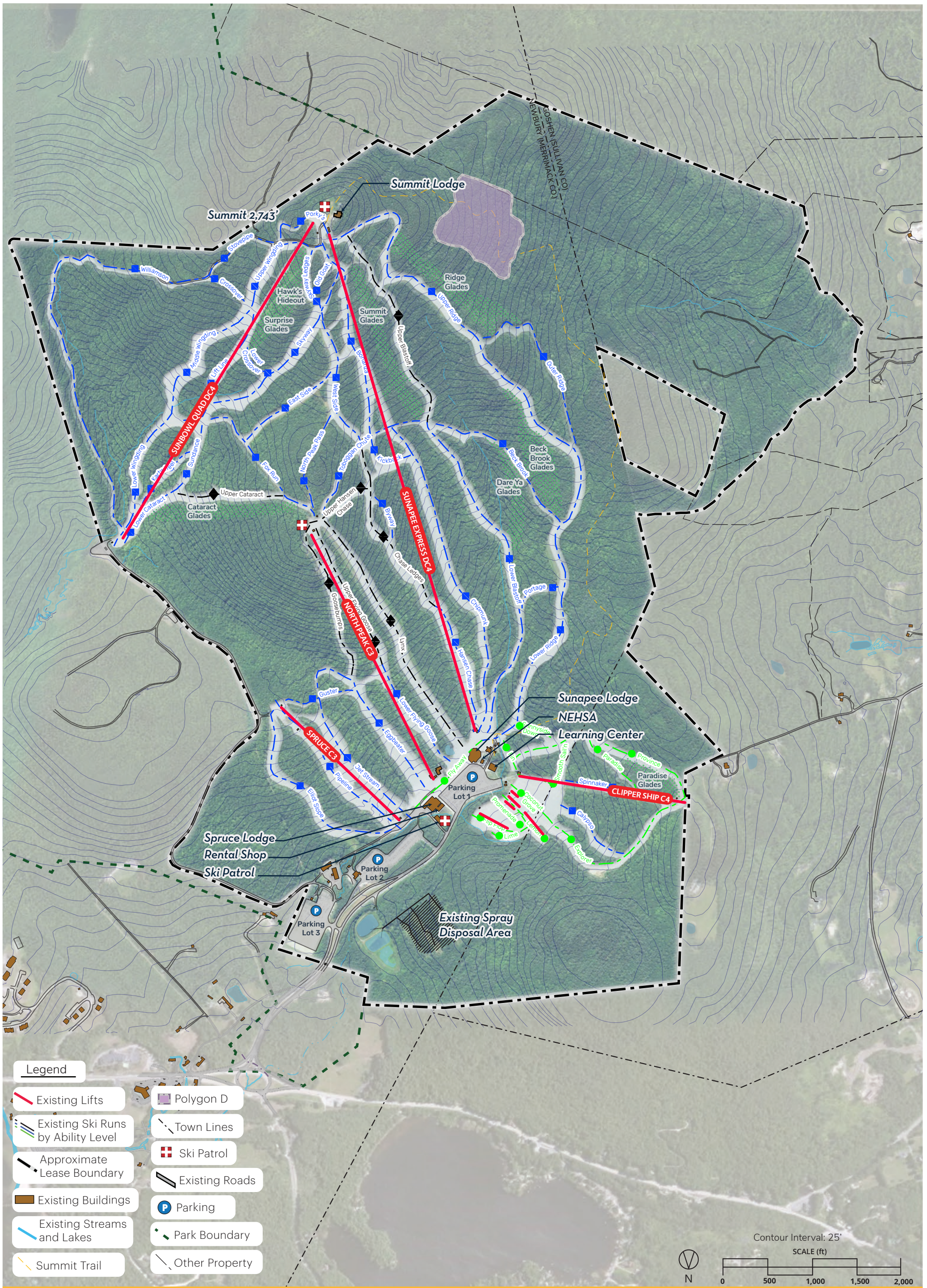
- Existing Lifts
- Existing Ski Runs by Ability Level
- Approximate Lease Boundary
- Existing Buildings
- Polygon D
- Town Lines
- Ski Patrol
- Existing Roads
- Parking
- Park Boundary
- Other Property

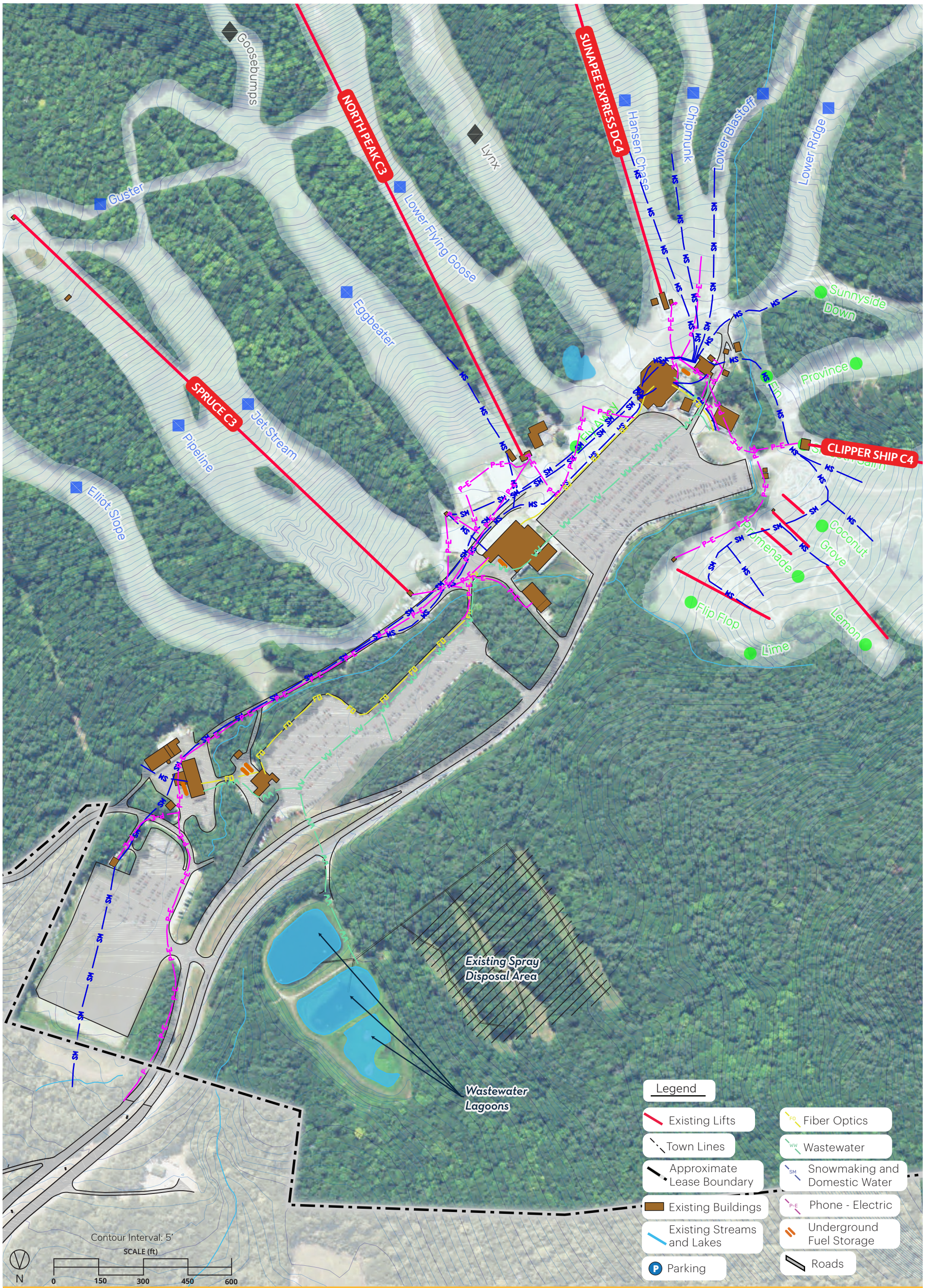
Slope Legend

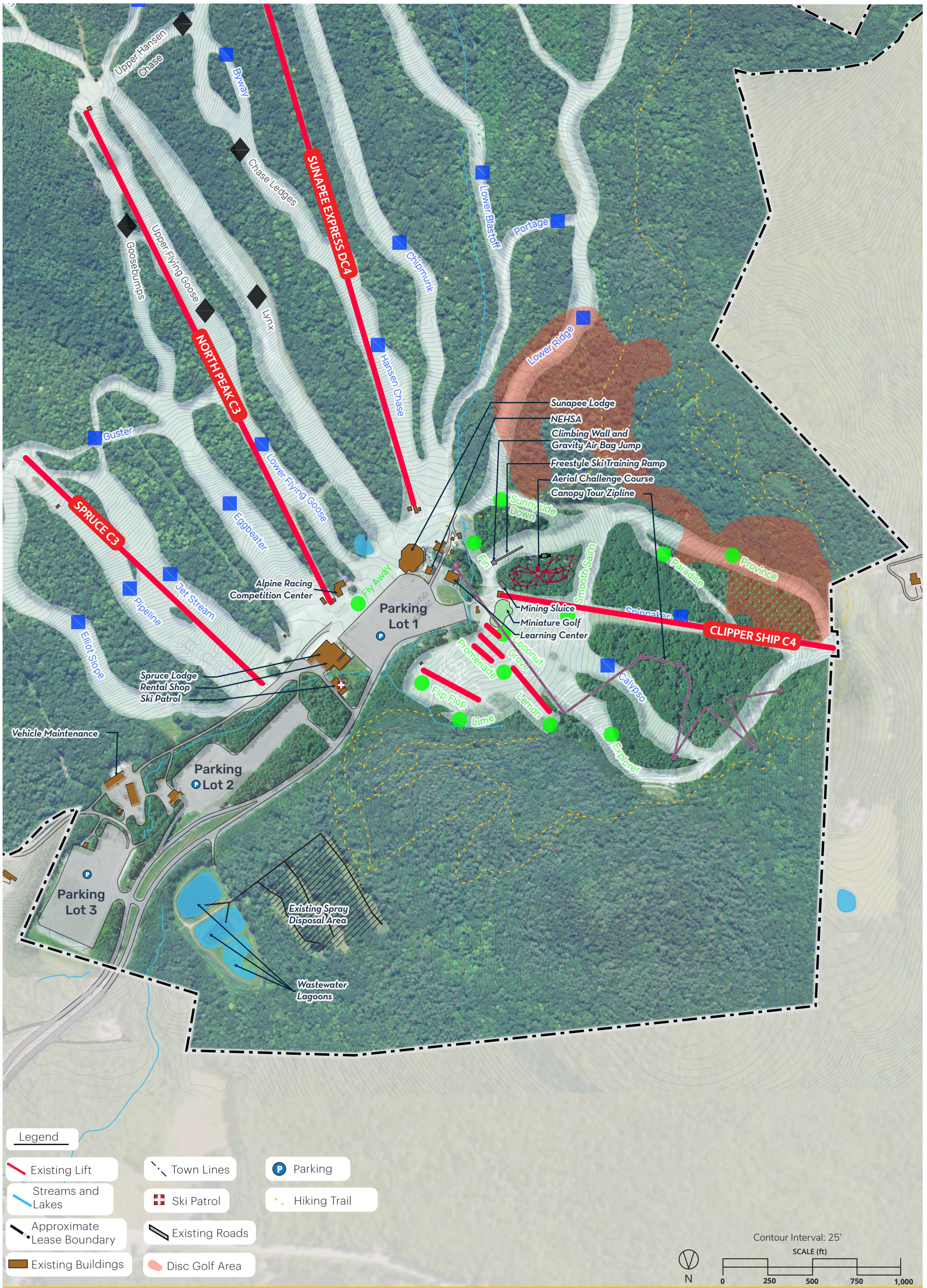


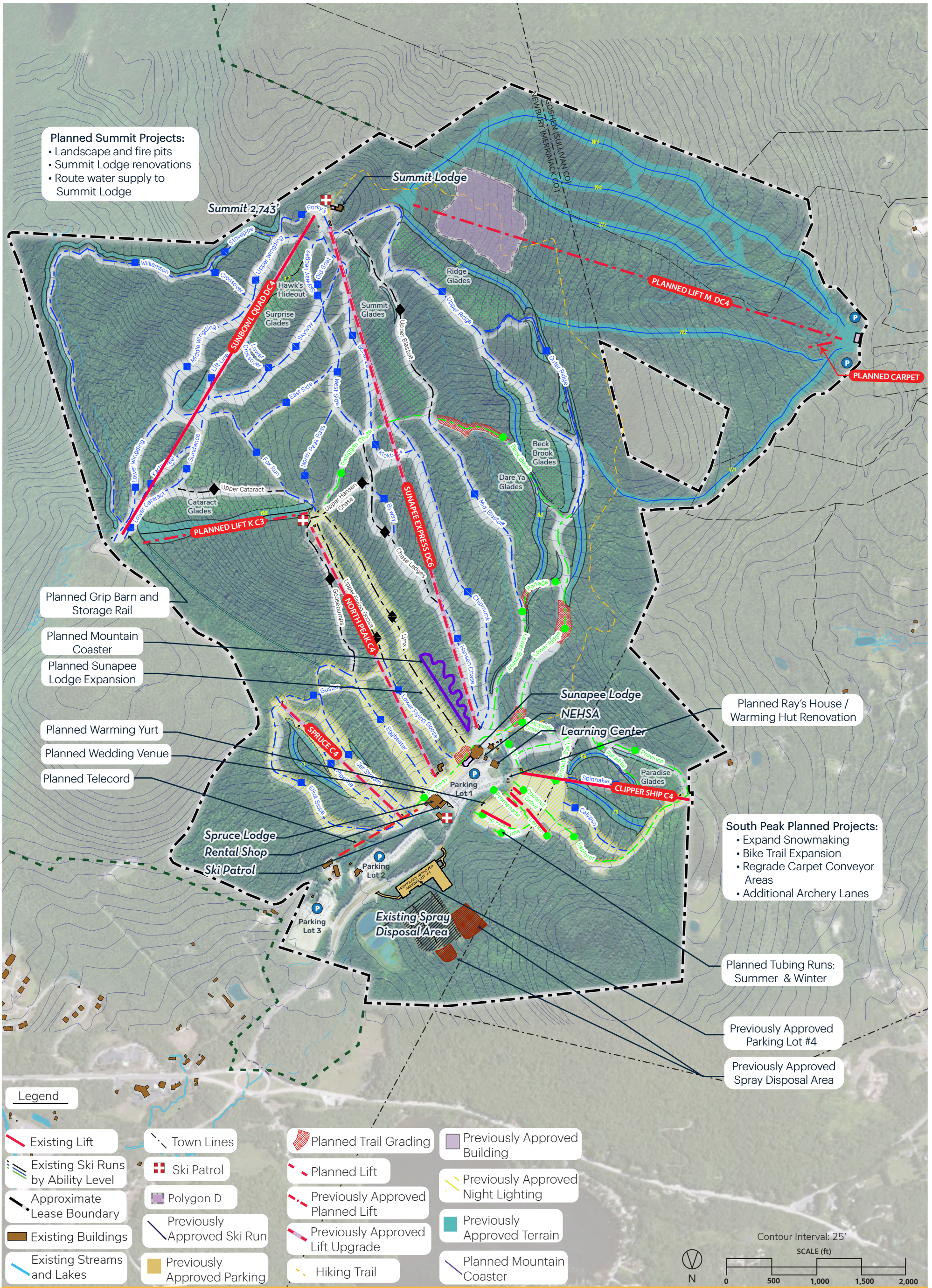
Contour Interval: 25'











Planned Summit Projects:

- Landscape and fire pits
- Summit Lodge renovations
- Route water supply to Summit Lodge

- Planned Grip Barn and Storage Rail
- Planned Mountain Coaster
- Planned Sunapee Lodge Expansion
- Planned Warming Yurt
- Planned Wedding Venue
- Planned Telecord

Planned Ray's House / Warming Hut Renovation

South Peak Planned Projects:

- Expand Snowmaking
- Bike Trail Expansion
- Regrade Carpet Conveyor Areas
- Additional Archery Lanes

Planned Tubing Runs: Summer & Winter

Previously Approved Parking Lot #4

Previously Approved Spray Disposal Area

Legend

- | | | | |
|------------------------------------|-----------------------------|----------------------------------|------------------------------------|
| Existing Lift | Town Lines | Planned Trail Grading | Previously Approved Building |
| Existing Ski Runs by Ability Level | Ski Patrol | Planned Lift | Previously Approved Night Lighting |
| Approximate Lease Boundary | Polygon D | Previously Approved Planned Lift | Previously Approved Terrain |
| Existing Buildings | Previously Approved Ski Run | Previously Approved Lift Upgrade | Planned Mountain Coaster |
| Existing Streams and Lakes | Previously Approved Parking | Hiking Trail | |

Contour Interval: 25'
SCALE (ft)
0 500 1,000 1,500 2,000



