

Pawtuckaway State Park

Webpage QR Code



Division of Parks and Recreation

216-A:1 - It is the intent of the general court that a comprehensive state park system shall be developed, operated, and maintained to achieve the following purposes in order of the following priority:

- I. To protect and preserve unusual scenic, scientific, historical, recreational, and natural areas within the state.
- II. To continually provide such additional park areas and facilities as may be necessary to meet the recreational needs of the citizens of all regions of the state.
- III. To make these areas accessible to the public for recreational, education, scientific, and other uses consistent with their protection and preservation.
- IV. To encourage and support tourism and related economic activity within the state.



Division of Parks and Recreation

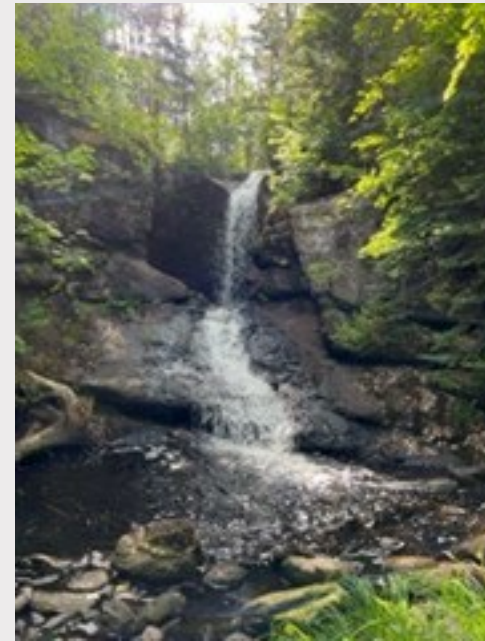
- Bureau of Park Operations
- Bureau of Ski Operations – Cannon Mountain Ski Area
- Bureau of Historic Sites
- Bureau of Trails
- Bureau of Community Recreation
- Parks Administration

- 90 Full-Time and 1,000 Part-Time staff



NH State Park System

- The Division is operationally self-funded by fees collected for park use.
 - Average operating budget is \$33,000,000
 - Division receives state general funds for Capital Improvements
- Manages 92 properties
 - Ski Areas
 - Beaches
 - Natural Areas
 - Waysides
 - Historic Sites
 - Recreational Trails
- 20 campgrounds
 - 3 Campgrounds exclusively for RVs offering premium sites (w/s/e).
 - Several campgrounds offer improved campsites (w/e).
 - Most campsites are standard sites with no services on-site; some have camping shelters or tent platforms.
 - Accommodations range from camping cabins to yurts to housekeeping cabins and one inn style room.



American Rescue Plan

The Division of Parks and Recreation was awarded American Rescue Plan Act (ARPA) funding in July 2021 to replace obsolete infrastructure, add new infrastructure, expand the number of campsites and supporting facilities to support existing visitors and meet the demand for camping experiences.

ARPA funding has to be encumbered by December 31, 2024 and spent by December 31, 2026.

Six NH State Park campgrounds were evaluated;

- Bear Brook, Bear Hill Camp
- Bear Brook, Catamount Pond Area
- Crawford Notch
- Jericho Mountain
- Mollidgewock
- Pawtuckaway

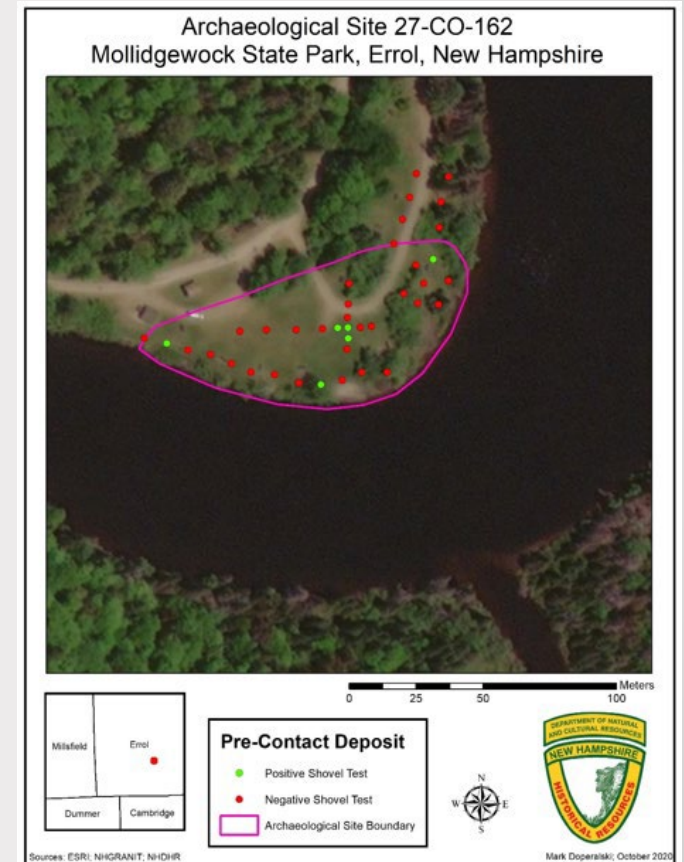


ARPA Continued

The Division worked with consultants to produce a feasibility study and construction cost estimates for six projects; three campgrounds, Pawtuckaway, Jericho Mountain and Mollidgewock State Parks will move into Phase II, design and engineering.

All of the six campgrounds studied for this feasibility study deserve consideration for future investment. In weighing the pros and cons of each campground project, the following issues for the projects that were not selected were factored into the decision to prioritize the three projects:

- High infrastructure cost due to lack of on-site utilities, road network, or existing buildings
- Operational/management challenges
- High capital costs required to renovate historic structures
- Archaeological resources discovered requiring further study



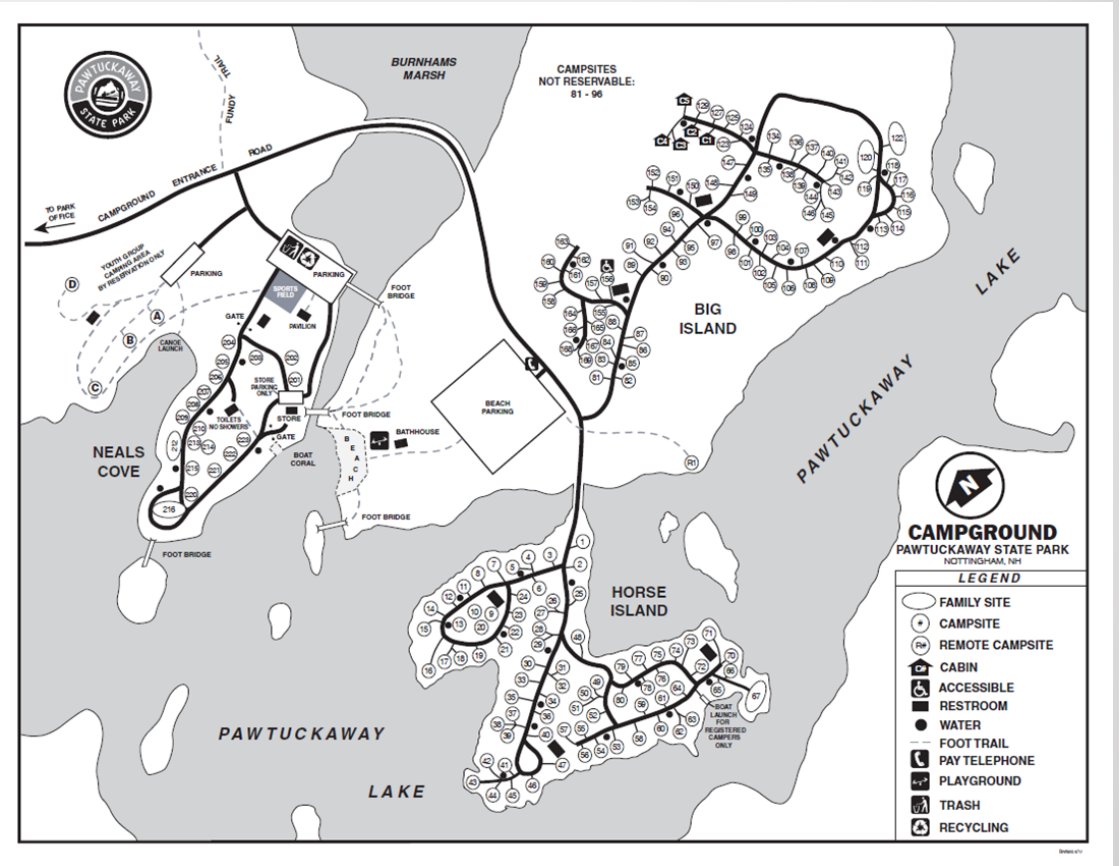
Why Pawtuckaway?

- Outdoor recreation nation-wide has increased due to the awareness of health benefits of outdoor recreation and the surge presented by the COVID pandemic.
- Recognized that our camping facilities were not prepared or flexible to respond to the COVID public health emergency and increased demand.
- Management structure in place
- Existing infrastructure and utilities
- Strong market demand
- Close to population centers



Pawtuckaway State Park Overview

- 5,500 acres
- Opened as a State Park in 1966
- 3 Camping Areas
 - Big Island
 - Horse Island
 - Neal's Cove
- Youth Camping Area
 - 4 sites with camping shelters
 - Pavilion and toilets
- Campsite Types
 - Cabin
 - Standard



Campground Facilities

- Neal's Cove
 - 19 Campsites
 - Toilet Building (no showers)
- Horse Island
 - 78 Campsites
 - 3 Toilet Buildings with Showers
 - Boat Launch
- Big Island
 - 82 Campsites
 - 5 Camping Cabins
 - 1 remote walk-in campsite
 - 3 Toilet Buildings with Showers



Concepts Evaluated

- Upgrading low occupancy sites to cabins and/or shelters.
- In-fill to take advantage of existing infrastructure.
- Changes in management by making youth group sites open to all campers.
- Adding new campsite types including remote, group, shelter and improved campsites.
- Improvements to guest services by constructing a new store and making it easier for guests on Big Island to launch their canoes and kayaks.

SITE UTILIZATION

2019-2021

QUICK FACTS

- > Average 3-Year Utilization: 57%
- > Average Peak-Season Utilization: 76%
- > Average Non-Peak Season Utilization: 47%

Proposed Development

- A new campground loop with a total of approximately 35 Improved Sites, water and electricity on site, will provide a site type not in the park and increase in the overnight capacity of the campground.
- A new bathhouse, designed to a standard that is appropriate for the historic context of the park, will support the new campground pod.
- Renovate toilet/shower building #8 on Big Island.
- A dump station, located along the existing road adjacent to the day use parking lot, will support recreational equipment users from all the different campgrounds within the park.

ESTIMATED COST = \$4,150,000

- Construction is expected to begin in the fall of 2024.



Next Steps

- Design and engineering will begin Spring 2023
- Bidding in the fall/winter of 2023, construction to begin in fall 2024.
- Plan review and comment at the 30% and 60% design stage
- Always willing to discuss the plans

Johanna Lyons

Johanna.Lyons@dncr.nh.gov

603-271-3935

