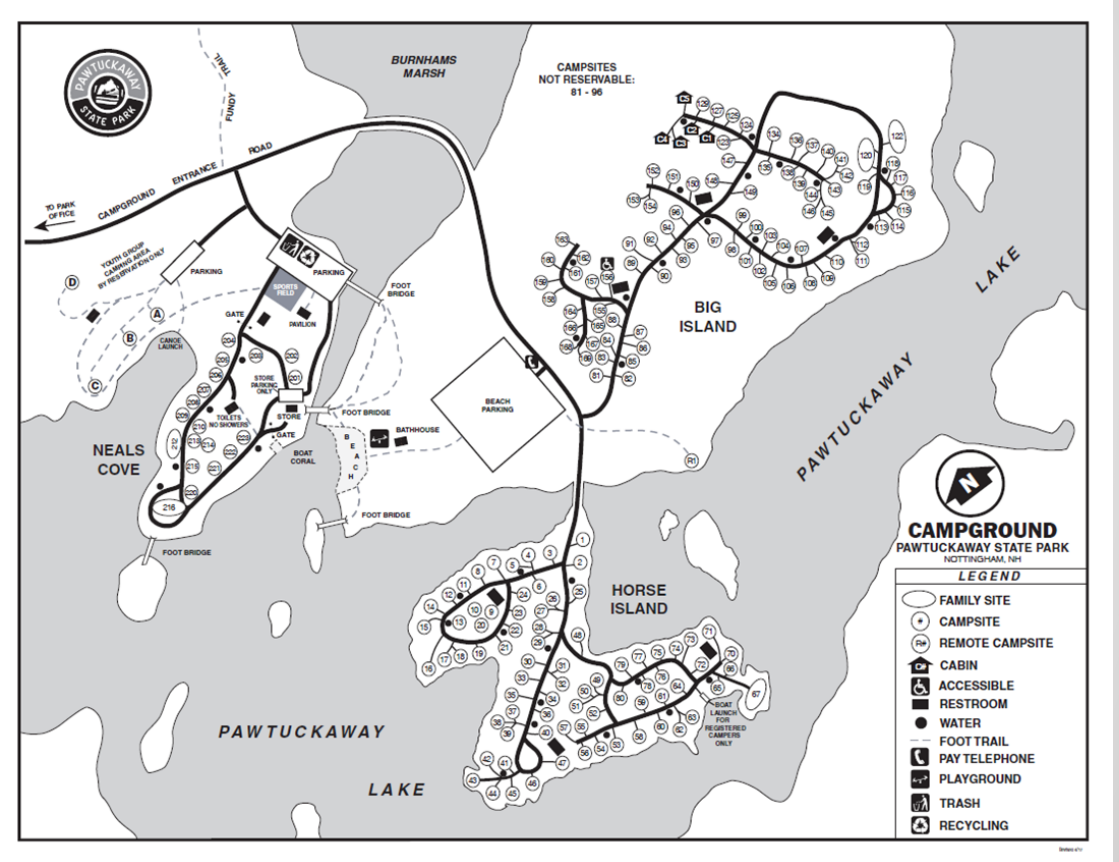


# Pawtuckaway State Park Campground Expansion Project

# Pawtuckaway State Park Overview

- 5,500+ acres
- Opened as a State Park in 1966
- Day-Use
  - Beach with Bathhouse
  - Playground
  - Hiking Trails
  - Retail & Boat Rentals
- 3 Public Camping Areas
  - Big Island
  - Horse Island
  - Neal's Cove
- Youth Camping Area
  - 4 sites with camping shelters
  - Pavilion and toilets
- Campsite Types
  - Cabin
  - Standard



# Campground Facilities

- Neal's Cove
  - 19 Campsites
  - Toilet Building (no showers)
- Horse Island
  - 78 Campsites
  - 3 Toilet Buildings with Showers
  - Boat Launch
- Big Island
  - 82 Campsites
  - 5 Camping Cabins
  - 1 remote walk-in campsite
  - 3 Toilet Buildings with Showers



# American Rescue Plan (ARPA)

The Division of Parks and Recreation was awarded American Rescue Plan Act (ARPA) funding to replace obsolete infrastructure, add new infrastructure, expand the number of campsites and supporting facilities to support existing visitors and meet the demand for camping experiences.

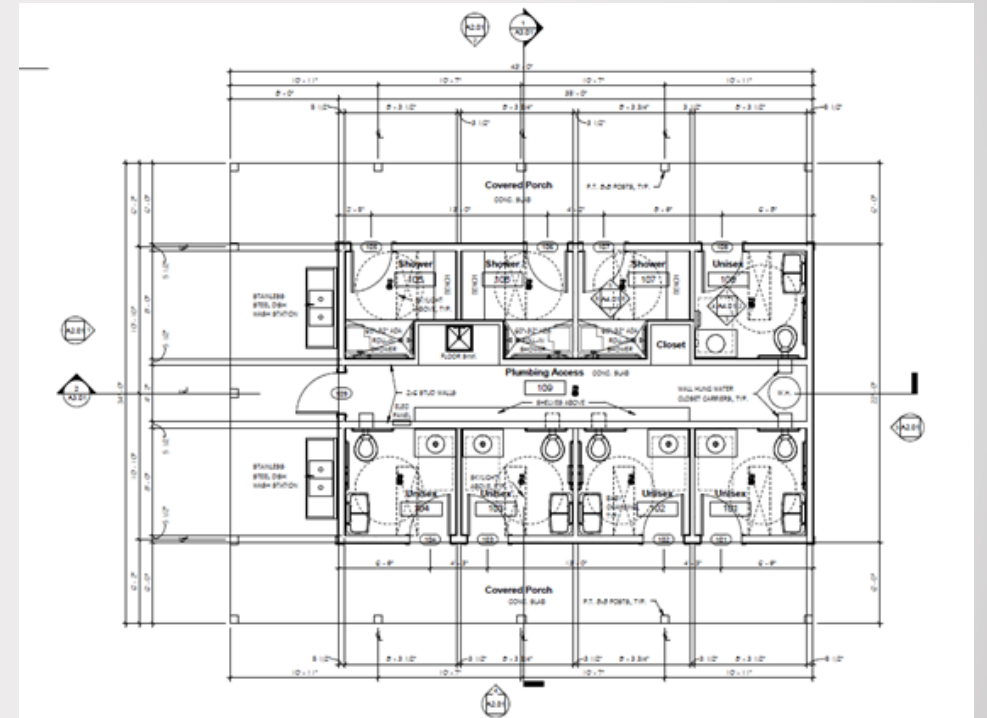
Phase 1 conducted a feasibility study of six campgrounds, including Pawtuckaway State Park.





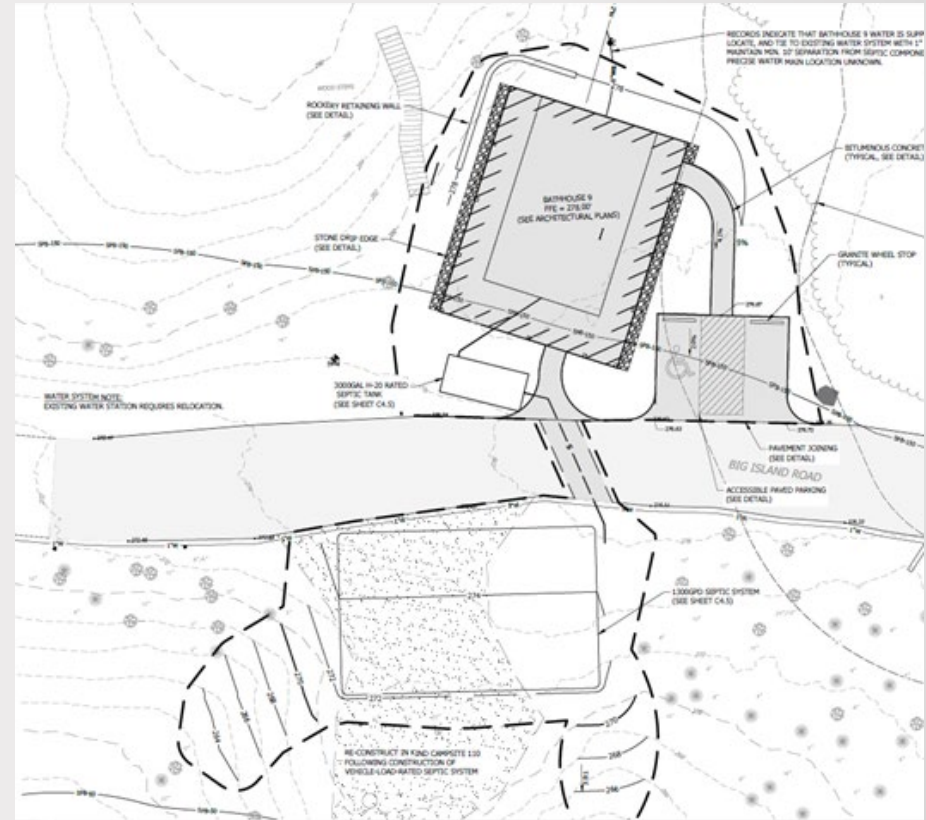
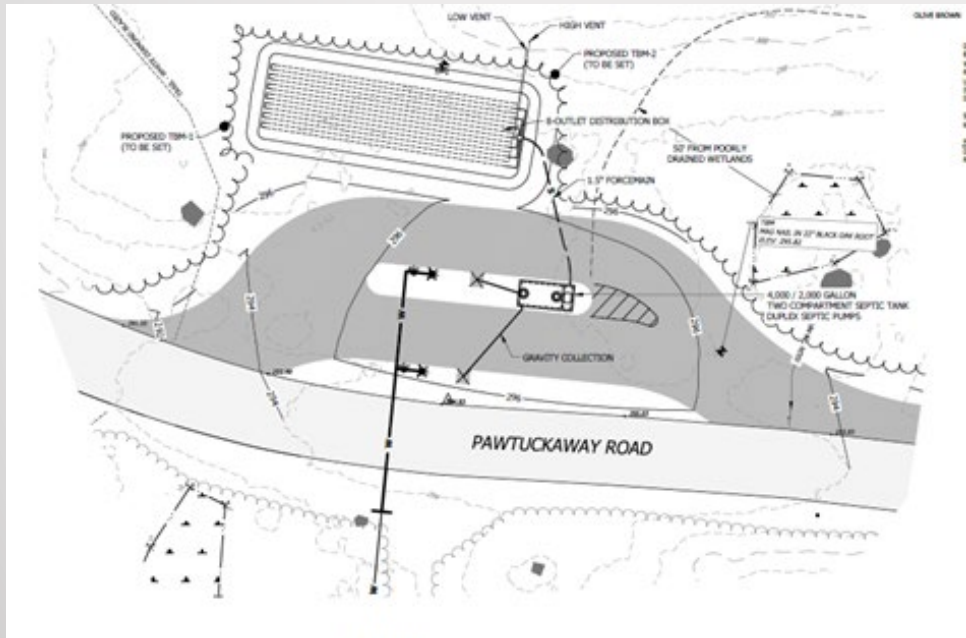
# Proposed Project

- Phase 1 preferred concept was to construct a new 19 site camping loop that would have a dedicated bathhouse and provide water and electric hookups on-site.
  - Public comment was not in favor of the proposal.
- New direction is to replace 5 existing bathhouses in the Big Island and Horse Island areas.
  - New bathhouse designed to be “covid friendly” with single occupancy facilities.
  - New septic systems at each bathhouse



# Proposed Project

- The project will also include...
  - Water system improvements
  - Site work for drainage and parking areas
  - Dump station for recreational vehicles along the park road



# Next Steps

- 80% plans are complete and being used for permit applications.
  - Current cost estimate is \$4,551,210
- 100% plans are due in March
- Out to Bid 4/4/24
- Pre-Bid Meetings, 4/9 & 4/11
- Bids Due 5/1/24
- Contract Approved in September 2024
- Work begins in October 2024
  - Phased, start on Horse Island
  - Big Island Area may be closed in CY 25 for construction
- Completion Date October 2025

# Project Information

- Project Webpage

<https://www.nhstateparks.org/news-events/improving-state-parks/arpa-projects>

- Johanna Lyons, Planning & Development Specialist

[Johanna.Lyons@dncr.nh.gov](mailto:Johanna.Lyons@dncr.nh.gov)